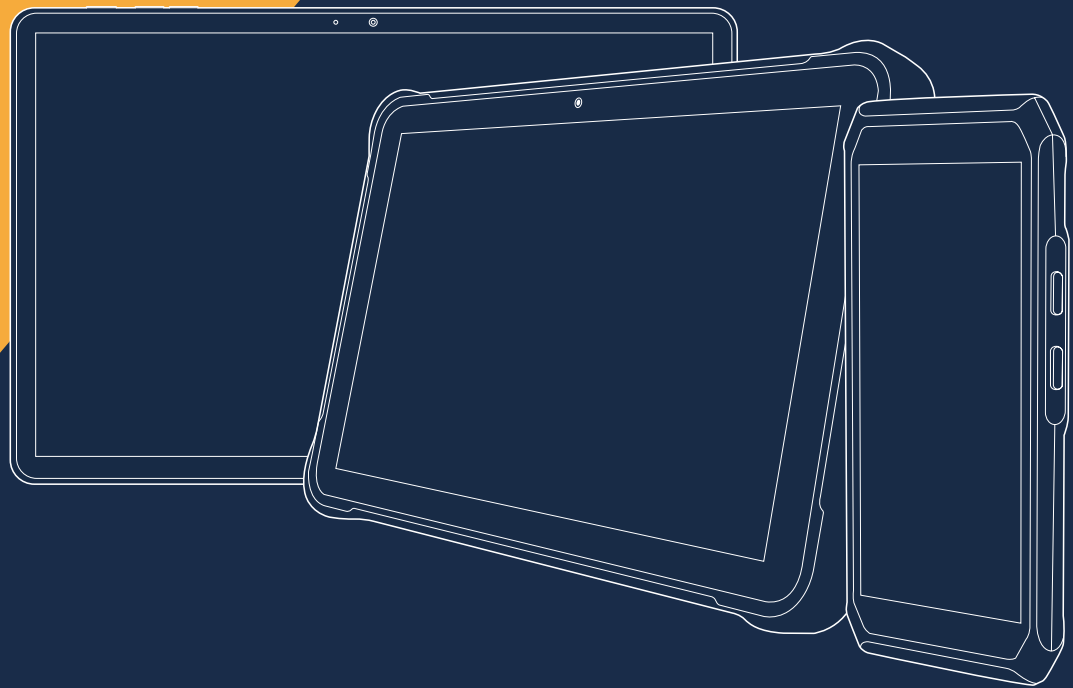


sewoo



MOBILE COMPUTER PRODUCT GUIDE BOOK

Handheld Terminal
Enterprise Tablet
Industrial Tablet

Your Complete Hardware
Solution Partner,
SEWOO



YOUR COMPLETE HARDWARE SOLUTION PARTNER

RETAIL

SEWOO Printing Solutions are widely used in various distribution sectors such as department stores, hypermarkets, and speciality retail stores for printing purposes including receipts, price tags (labels), and coupons.

TOURISM, DINING

SEWOO Printing Solutions are widely used in various sectors of the tourism and food service industry, including hotels, restaurants, and kitchens, for printing purposes such as receipts, kitchen printers, order labels, and ingredient labels.

TRANSPORTATION, LOGISTIC

SEWOO Printing Solutions are widely used in various sectors of the transportation and logistics industry, including warehouses, logistics centers, railway stations, and airports, for printing purposes such as parcel and logistics delivery receipts, in-flight duty-free receipts, baggage labels, notices, and airline bus terminal tickets.

HEALTHCARE

SEWOO Printing Solutions are widely used in various sectors of the healthcare industry, including hospitals, pharmacies, and medical research laboratories, for printing purposes such as patient information, examination results, symptoms, and prescription labels.

MANUFACTURING

SEWOO Printing Solutions are widely used in various sectors of the manufacturing industry, including warehouses, factories, and production sites, for printing purposes such as invoices and receipts, inventory management labels, product information labels, packaging labels, incoming/management labels, and component tag printing.

PUBLIC SECTOR

SEWOO Printing Solutions are widely used in various sectors of the public domain, including public institutions, police stations, military, and libraries, for printing purposes such as parking and traffic violation receipts/labels, and book location tags.

ON-SITE SERVICES

SEWOO Printing Solutions are widely used in various sectors of on-site services, including delivery shops and field service businesses, for printing purposes such as delivery receipts, on-site sales, and service receipts.



CONTENTS



Handheld Terminal

NBP-65

NBP-75

Enterprise Tablet

ST10/ST10N

ST11

Industrial Tablet

BPR-08A/W

BPR-10IIA/W

Handheld Terminal

SEWOO Handheld Terminal enables efficient, real-time data management.

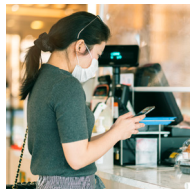
SEWOO Handheld Terminal ensures efficient data management.

SEWOO Handheld Terminal is a powerful, portable device designed to optimize data management and streamline workflows. It offers real-time processing capabilities, making it ideal for fast-paced environments. With its intuitive design and robust features, it enhances accuracy and efficiency in daily operations.

Application



Delivery



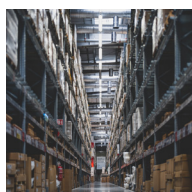
Retail



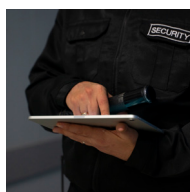
Transportation



Manufacturing



Logistics



Security



Public Services



Agriculture

Handheld Terminal



NBP-65

PRODUCT SPEC

SYSTEM CONFIGURATION	CPU	COMMUNICATION TRANSMISSION	WWAN (NETWORK FREQUENCY)	ASIA & EUROPE	
	Octa-core 2.0 GHz				- 2G : B2/B3/B5/B8 - 3G : WCDMA : B1/B2/B5/B8 - CDMA&EVDO : BC0 / - TD-SCDMA : B34/B39 - 4G : FDD-LTE : B1/B3/B7/B8/B20 TDD-LTE : B38/B39/B40/B41/B34
OPERATING SYSTEM	Android 9.0			AMERICA	- 2G : B2/B3/B5 / - 3G : B1/B2/B4/B5; CDMA&EVDO : BC0/BC1 (U.S.A) - 4G : B1/B2/B3/B4/B5/B7/B12/B17/ B28A/B28B/B41
MEMORY	Standard : 4GB RAM+64GB ROM Option : 2GB RAM+16GB ROM, 3GB RAM+32GB ROM		WWAN (DATA SERVICE)		- GSM/GPRS/EDGE/CDMA/UMTS/HSPA/ HSPA+/EVDO/WCDMA/TD-SCDMA/TDD-LTE/ FDD-LTE -Wi-Fi 802.11 a/b/g/n/r/ac (Dual-band Wi-Fi:2.4G+5G), Double PA amplifier
EXPANSION SLOT	Mini SD card, up to 256 GB		WIRELESS LAN		Wi-Fi 802.11 a/b/g/n/r/ac (Dual-band Wi-Fi:2.4G+5G), Double PA amplifier
DISPLAY	4.7inch, 1280 x 720 High resolution		BLUETOOTH		Bluetooth 5.0
KEYPAD	4 Front keys, 4 Side keys, Power key		GPS		GPS/AGPS/Beidou Compass/Galileo/Glonass
TOUCH PANEL	Industrial-grade capacitive touch panel (supporting operating with gloves)	Structural Parameters	DIMENSION (WxDxH)		2.8"x0.6"x5.9" (73.5x16x150mm)/ (head 24mm thickness)
CAMERA	8 MPX camera in the back side, Autofocus lens, LED flash		WEIGHT		0.5lb (230g, With battery)
EXIT WINDOW	Corning® Gorilla® glass	Operating Environment	DEVELOPMENT TOOLS		Android SDK + JDK + Eclipse
VIBRATION MOTOR	Built-in programmable vibration motor		PROGRAMMING LANGUAGE		Java
BATTERY	3.8V 4000mAh rechargeable (optional : 8000mAh) lithium polymer battery Fast Charging scheme		OPERATING TEMP		-4°F~140°F (-20°C~60°C)
			STORAGE TEMP		-40°F~140°F (-40°C~60°C) battery included -40°F~158°F (-40°C~70°C) battery not included
NOTIFICATION	Vibrator alerts / LED / Audio notification		RELATIVE HUMIDITY		0~95% (Non-condensing)
AUDIO	Built-in microphone / Mini USB / Headphone connector		DROP RATING		4.9ft.(1.5m) to concrete
SENSOR	G-Sensor/Proximity sensor/Light sensor		DUST-AND WATER-RESISTANCE RATING		IP65
GMS (ONLY GMS GLOBAL CERTIFIED)	PASSED	ACCESSORIES	STANDARD		onforms to ±15kV air discharge, ±8kV direct discharge
NFC (OPTIONAL)			OPTIONAL		Battery, Power adapter, Hand strap, Bottom charging cable,Power Adapter (5V, 2A) USB Cable, Single cradle (device and battery), 4-slot device cradle & Battery cradle, Wrist Strap, Protective case (with wrist strap), Waist bag, Pistol grip (without UHF), Extended Battery, Screen protector (composite)
	13.56 MHz / Within 30mm / ISO14443A / 14443B / 15693				

Handheld Terminal



NBP-75

PRODUCT SPEC

SYSTEM CONFIGURATION	PROCESSOR	COMMUNICATION TRANSMISSION	WWAN (NETWORK FREQUENCY)	2G : B2/B3/B5/B8 3G : WCDMA/B1/B2/B4/B5/B8 4G : FDD-LTE:B1/B2/B3/B4/B5/B7/B8/B12/ B17/B20/B28A/B28B/B66/ TDD-LTE:B34/B38/B39/B40/B41(190M)
	Octa-core 2.2 Ghz high-performance processor		WWAN (DATA SERVICE)	GSM/GPRS/EDGE/CDMA/UMTS/HSPA/HSPA+/EVDO/WCDMA/TDD-LTE/FDD-LTE
OPERATING SYSTEM	Android 13.0 (AER) Android 15.0 (Upgradeable)		WLAN FUNCTION	Wi-Fi 802.11 a/b/g/n/r/ac/ax 2.4Ghz+5Ghz
MEMORY (ROM+RAM)	64GB + 4GB (Standard), 128GB+6/8/12GB (Optional)		BLUETOOTH	Bluetooth 5.1, support BLE
SIM	Two out of three SIM card slots, support dual-SIM dual-standby * Two out of three SIM card slots: two cards can be held at the same time, Nano SIM card + Nano SIM card /Nano SIM card + TF card			
EXPANSION SLOT	Micro SD card (up to 2 TB)		GPS	GPS/GIONASS/BDS/AGPS/Galileo/QZSS
DISPLAY SCREEN	5.5-inch, resolution: 1440*720 pixels IPS HD screen	DEVELOPMENT SUPPORT	PROGRAMMING LANGUAGE	Java
TOUCH SCREEN	Industrial capacitive screen, support wet-hand operation/glove mode/multi-touch / gesture operation		DEVELOPMENT API	iScan API (Scanning Development Kits), Device API (Device Management/Configuration Development Kits), Android Standard Interface
CAMERA	13 megapixels rear camera, support PDAF; 5 megapixels front camera		DEVELOPMENT TOOL	Eclipse/Android Studio
FLASHLIGHT	1A high brightness flashlight	COMMUNICATION INTERFACE	USB INTERFACE	Type-C (with headset function) *1
KEYPAD	5 keypads in total: scan key *2, power key *1, volume key *2		OTG INTERFACE	Support
AUDIO	Built-in dual microphone	SCANNING ENGINE	SCANNING ENGINE	DS7000 Pro (Optional : DS7500/HS7/N5703/ N6703/N6803)
SENSORS	G-sensor/ Proximity sensor/Light sensor/ Gyroscope/High-precision barometer/ Electronic compass		BARCOD TYPE	It can scan 1D/2D barcode
BATTERY	4.4V lithium battery, with 5000mAh (Optional: Smart battery), detachable, back-up battery support		SCANNING ACCURACY	≥3.33mil
CHARGING METHOD	Type-C charging, support 9V/2A fast charging		SCANNING ANGLE	Pitch: ±60° ; Skew: ±45° ; Tilt: 360°
REMINDER	Vibration reminder/LED reminder/ High power speaker		VIEW ANGLE	Horizontal: 44.3°, Vertical: 28.4°, Diagonal: 51°
VIBRATING MOTOR	Built-in vibrating motor		MOTION ERROR TOLERANCE	8m/s
INTERCOM FUNCTION (OPTIONAL)	Support one-button PTT calls	ACCESSORIES	STANDARD ACCESSORIES	USB cable*1, hand strap*1, power adapter*1, device-back strap*1, battery*1
ENVIRONMENTAL PARAMETER	WORKING TEMPERATURE		OPTIONAL ACCESSORIES	2-in1 charging cradle, 4-slot Battery Charging Cradle, Protective cover, Protective film, Waist bag, Stylus pen, Pistol grip(only for straight type scanner), Multi-functional 5-slot Base, Single Charging Cradle
	STORAGE TEMPERATURE	NFC (STANDARD)	WORKING FREQUENCY	13.56 Mhz
	HUMIDITY		READING DISTANCE	Within 35mm
	DROP SPECIFICATION		COMMUNICATION PROTOCOL	ISO14443A/14443B/15693
	ROLLER DROP SPECIFICATION	STRUCTURE PARAMETER	DIMENSION (L*W*D)	162.2mm*78.5mm*15mm (the thickness point 25mm)
	INGRESS PROTECTION		WEIGHT	263g (including the battery)
	ESD PROTECTION			

Key Feature



NBP-65

- Rugged and light weight
- Powerful & efficient Data collection
- Fast transmission with 4G network
- GMS(only GMS global certified) PASSED
- IP65 protection grand and 1.5m drop rate & 5G Wi-Fi
- Supports 3types wireless LAN (North America, Europe, Asia)
- Provides 4G networks and dual band Wi-Fi 2.4G+5G (Wi-Fi 802.11 a/b/g/n/r/ac)

NBP-75

- High-performance octa-core 2.2 Ghz processor
- Powerful GPU support and 45°tilt design for efficient scanning & decoding capability
- Support for Wi-Fi 6
- Designed for rugged protection
- Large battery capacity : 5,000mAh

Enterprise Tablet

SEWOO Enterprise Tablet is a versatile device designed for efficient, real-time operations across industries.

SEWOO Enterprise Tablet enables real-time operations.

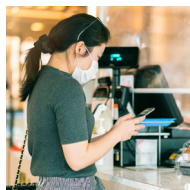
The Enterprise Tablet is a powerful device designed for efficiency and mobility. It supports real-time operations, enhancing productivity across various industries. With a durable build and versatile features, it meets the demands of fieldwork and office environments alike.

From logistics and healthcare to manufacturing and retail, it streamlines processes and improves accuracy. The tablet enables seamless data management, communication, and task execution on the go. Compact yet powerful, it's the ultimate tool for modern businesses.

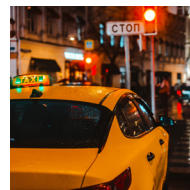
Application



Delivery



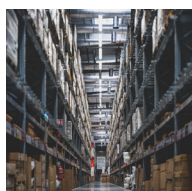
Retail



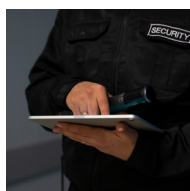
Transportation



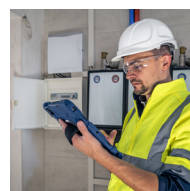
Manufacturing



Logistics



Security



Public Services



Agriculture

Enterprise Tablet



ST10



ST10N



ST11

PRODUCT SPEC

PHYSICAL CHARACTERISTICS

SCREEN SIZE	10.1 Inch	10.1 Inch	11 Inch
SCREEN TYPE	IPS	IPS	IPS
DISPLAY RESOLUTION	1280*800	1280*800	1920*1200 FHD
PROCESSOR	MediaTek MT8788 Octa core	MediaTek MT8183 Octa core	MediaTek G88 Octa Core
MAIN FREQUENCY	2.0GHz	2.0GHz	1.8GHz
RAM	4GB	4GB	6GB
STORAGE	64GB	64GB	128GB
OS	Android 12	Android 12	Android 14
CAMERAS	2MP front camera, 5MP rear camera	2MP front camera, 5MP rear camera	5MP front camera, 13MP rear camera with flashligh
NETWORKS	2.4G + 5G Dual Band WiFi (IEEE 802.11b/g/n/ac), GPS & A-GPS, Bluetooth 5.0	2.4G + 5G Dual Band WiFi (IEEE 802.11b/g/n/ac), GPS & A-GPS, Bluetooth 5.0	2.4G + 5G Dual Band WiFi (IEEE 802.11a/b/g/n/ac), GPS, Bluetooth 5.0 2G/3G/4G LTE 2G: Band 2/3/5/8 3G: Band 1/2/5/8 4G LTE: Band 1/3/5/7/8/20/34/38/39/40/41
PORTS	Type C port x1, 3.5mm headphone jack x1	Type C port x1, 3.5mm headphone jack x1	Type C port x1
EXTENSION	Micro SD slot	Micro SD slot	Micro SD/SIM slot
SPEAKER	Built-in dual speaker & Mic	Built-in dual speaker & Mic	Built-in dual speaker & Mic
PHYSICAL BUTTONS	3	3	3
BATTERY	6000mAh	-	7000mAh
SIZE	242mm(L) × 160.1mm(W) × 8.4mm(H)	242mm(L) × 160.1mm(W) × 8.4mm(H)	258mm(L) × 170mm(W) × 10mm(H)
NET WEIGHT	513.8g	450g	500g
ACCESSORIES	Guide book x1, Warranty card x1, Type C cable x1, Charger x1	Guide book x1, Warranty card x1, Type C cable x1, Charger x1	Guide book x1, Warranty card x1, Type C cable x1, Charger x1

Key Feature

ST10 / ST10N (Not included battery)



- **Powerful Performance:**
MediaTek MT8788 8-core processor for high performance and efficient multitasking. 4GB LPDDR4X RAM and 64GB storage (expandable via microSD) for smooth operation and ample storage space.
- **High-Quality Display:** 10.1-inch IPS display with 1280x800 HD resolution for clear, vibrant visuals and wide viewing angles.
- **Premium Design:**
Black metal body with smooth edges for a sleek, durable, and stylish appearance.
- **Enhanced Audio:**
PureSound Audio system with a K9 digital amplifier chip for superior sound quality.
- **Connectivity and Networking:** 802.11ac dual-band Wi-Fi for fast and stable internet connection. Bluetooth 5.0 for easy pairing with other devices.
- **Long-lasting Battery (ST10):**
6000mAh large-capacity lithium battery for extended use and reliability.
- **Convenient Charging:** Type-C port for fast and convenient charging.

ST11



- **Large, High-Quality FHD Display:**
11-inch IPS screen with a 1920x1200 resolution for clear, vibrant visuals.
- **Powerful Performance:** MediaTek G88 Octa-Core Processor (1.8GHz) for smooth multitasking and fast performance. 6GB RAM and 128GB storage (expandable via microSD) for efficient data handling and storage.
- **Advanced Operating System:**
Android 14 for the latest features, security updates, and user-friendly experience.
- **Camera System:** 13MP rear camera with flashlight for high-quality photos and videos. 5MP front camera for clear video calls and selfies.
- **Dual Connectivity:**
2.4G + 5G Dual Band WiFi (IEEE 802.11a/b/g/n/ac) for fast, stable internet. 2G/3G/4G LTE support for reliable mobile network access across various bands. Bluetooth 5.0 and GPS for seamless device pairing and navigation.
- **Long Battery Life:** 7000mAh battery for extended use, ensuring all-day productivity.
- **User-Friendly Features:** USB Type-C port for fast charging and data transfer. Physical buttons (3) for easy navigation. Built-in dual speakers and mic for clear audio output and input.
- **Robust and Expandable:** Micro SD/SIM slot for additional storage and SIM card use.

Industrial Tablet

SEWOO Industrial Tablet is a rugged, high-performance device designed for demanding environments and real-time data processing.

SEWOO Industrial Tablet is a rugged, high-performance device.

Industrial Tablet is built for durability and high performance in harsh environments. It is designed to withstand extreme conditions, including dust, water, and temperature variations. Equipped with powerful hardware, it ensures fast and reliable data processing.

With its rugged construction, the tablet is ideal for industries like manufacturing, logistics, and field services. It supports real-time data collection, communication, and task management. The Industrial Tablet is the perfect tool for professionals working in demanding environments.

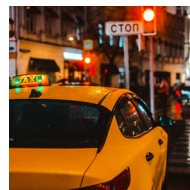
Application



Delivery



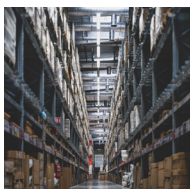
Construction



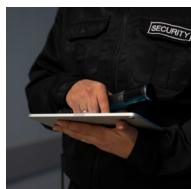
Transportation



Manufacturing



Logistics



Public Safety



Field Inspections



Agriculture

Key Feature



BPR-08 Series

1. IP67 Protection Level:

BPR-08W: IP67 industrial protection level is more practical for complex industrial environments.

BPR-08A: IP67 high protection level, in accordance with MIL-STD-810G.

2. 1D/2D Barcode Support:

BPR-08W: 1D/2D Barcode optional.

BPR-08A: Support 1D/2D, NFC and other functional modules for free selection.

3. Multiple Wireless Communication Methods:

- BPR-08W: Multiple high-speed wireless communication methods such as 4G all network communication, Bluetooth, WiFi, etc.

- BPR-08A: Optional 3G/4G all network communication, WiFi, Bluetooth and other communication modes.



BPR-10II Series

1. Ethernet:

BPR-10IIW: 1,000 Mbps Ethernet.

BPR-10IIA: 1,000 Mbps Ethernet.

2. Accessories:

BPR-10IIW: Various accessories as hand strap, docking station ...etc. (optional).

BPR-10IIA: Various accessories as hand strap, docking station ...etc. (optional).

3. Performance in Harsh Environments:

BPR-10IIW: Best fits for harsh working environments assuring a great performance.

BPR-10IIA: Best fits for harsh working environments assuring a great performance.

4. WiFi:

BPR-10IIW: WiFi 802.11ac/b/g/n 5G&2.4G Dual band.

BPR-10IIA: WiFi 802.11a/b/g/n/ac 2.4G.

Industrial Tablet



BPR-08A

MT8788

CPU	MT8788, 8core ARM® / Cortex-A73 MPCore™ up to 2.0GHz
RAM/ROM	EMCP : 4GB+64GB (Optional : 6GB+128GB)
WIFI	802.11a/b/g/n/ac, Wireless AP (Mobile AP) 2.4G, 5G
OS	Android 11
GPS	Support Beidou+GPS+ glonass Capture sensitivity : -163 dBm
TOUCH SCREEN	Support 10 points touch G+G Capacitive touch panel
WWAN	TDD-LTE : B34/B38/B39/B40/B41/B66 FDD-LTE : B1/B2/B3/B4/B5/B7/B8/B12/B17/B20/B28 WCDMA : B1/B2/B4/B5/B8 CDMA2000 : BC0 TD-SCDMA : B34/B39 GSM : B2/B3/B5/B8
NFC	ISO/IEC14443, ISO/IEC15693, MIFARE, Felica, Read distance : 3-5cm, Front
SENSOR	1. Light Sensor 2. Proximity Sensor 3. Geomagnetism 4. Gyroscope 5. Accelerometer 6. Baroceptror
PRODUCT SIZE / WEIGHT	228*137*13.3mm / 570g
POWER AND BATTERY	7800mAh/3.8V Play video duration : About 15 Hous (70% volume, 70% nit, Play 1080PHD video) Screen standby duration : About 200 Hous
BATTERY TYPE	Built in unremovable Li-ion Polymer Battery
LCD	8 inch / 1200*1920 / Min : 330nit, Typ : 350nit Max : 400nit / IPS Screen / Active Area :107.64(H) x 172.224(V)
SPEAKER	8Ω, 1.5W x1
BUTTON	Power, V+, V-, P, F, H
PROOF DEGREE	1. Waterproof IP65, but in fact is IP67 design 2. Drop 1.2m, 6 sides
CERTIFICATION	1. Military 810G 2. EU CE, US FCC
LIGHT TRANSMITTANCE	
LANGUAGE	
CAMERA	
BLUETOOTH	
MULTI-MEDIA (HARDWARE DECODING)	Photo Viewer : BMP, JPG, GIF, PNG Video Format :MEPG 1/2/4,H.263/H.264,RMVB,WMV/ VC-1,MVC,AVS,MJPEG. (UP TO 1080P) Audio Format : MP3,WMA,WAV,OGG,FLAC,ALAC,APE,AAC,AC-3,DTS (need license)
INTERFACE IN/OUT PORT	1. USB 2.0 *1 2. Download/Charge *1 3. RJ45 Ethernet 10/100M (USB 3.0 transfer) *1 4.RS232(Miniusb Transfer) *1 5. 3.5mm headphone jack *1 6. DC power jack (5V, 3A, Ø3.5mm) *1
POGOPIN	Back 16PIN : USB2.0x1+UART RS232x1 Bottom 8PIN : USB2.0x1+UARTRS232x1+Chargerx1



BPR-08W

N5100	I5-8200Y
Intel N5100	Intel i5-8200Y
4GB+64GB/8GB+256GB (optional)	8GB+256GB/16GB+512GB (optional)
802.11a/b/g/n/ac Wireless Internet Wireless AP (Mobile AP) 2.4G, 5G	802.11a/b/c/g/n Wireless Internet Wireless AP (Mobile AP) 2.4G, 5G
Windows 10	
BDS, GPS, GLONASS	
10 point touch	
Default :SLM770A-SA : (Global band) LTE FDD:B1/2/3/4/5/7/8/28/66 LTE TDD:B40 WCDMA:B1/2/4/5/8 GSM:850/900/1800/1900 Optional : SLM750-VA (only North America) LTE-FDD:B2/4/5/12/13/17/25/26 LTE-TDD:B41 WCDMA:B2/4/5 GSM:850/1900	
ISO14443; TYPE A; Mifare 13.56 MHz, Distance: 7-15mm	
1. Light sensor 2. Compass 3. Baroceptror	
238*144*16.8mm / 700g	
5000mAh; 7.7V Duration : 7 hours Standby time : 6 days	
-	
8 inch; 1200*1920; 400nits	
1.5W x1	
V+ -, Power, "F" for Barcode Scan / Customized Button: P,H	
1. Anti-dust & Waterproof IP65-IP67 2. Dropping Resistance 1.2 meter	
1. MIL-STD-810G 2. ISO 3. IP67 4. MSDS	
Over 90%	
multi language	
Front Camera 5.0M + Rear Camera 13.0M (Support flash LED)	
BT 4.2	
Photo Viewer : BMP, JPG, GIF, PNG Video Format :MEPG 1/2/4,H.263/H.264,RMVB,WMV/ VC-1,MVC,AVS,MJPEG. (UP TO 1080P) Audio Format : MP3,WMA,WAV,OGG,FLAC,ALAC,APE,AAC,AC-3,DTS (need license)	
1. HDMI*1 2. SIM Card Slot*1 3. RS232*1 4. Earphone*1 5. DC*1; 3.5*15mm 6. USB 3.0 *3	
Back pogopin: USB 2.0 Charging RS232 Bottom pogopin: USB 2.0 Charging RS232	
Support	
Support	
Support	
Extra Hand-string(carry strap), Docking station, Car holder (compatible 10inch), Car charger DC3.5, Stylus pen, 5V3A EU/US charger	
Extra Hand-string(carry strap), Docking station, Car holder (compatible 10inch), Car charger DC4, Stylus pen, 12V4A adapter	

PRODUCT SPEC

PHYSICAL CHARACTERISTICS

CPU	MT8788, 8core ARM® / Cortex-A73 MPCore™ up to 2.0GHz
RAM/ROM	EMCP : 4GB+64GB (Optional : 6GB+128GB)
WIFI	802.11a/b/g/n/ac, Wireless AP (Mobile AP) 2.4G, 5G
OS	Android 11
GPS	Support Beidou+GPS+ glonass Capture sensitivity : -163 dBm
TOUCH SCREEN	Support 10 points touch G+G Capacitive touch panel
WWAN	TDD-LTE : B34/B38/B39/B40/B41/B66 FDD-LTE : B1/B2/B3/B4/B5/B7/B8/B12/B17/B20/B28 WCDMA : B1/B2/B4/B5/B8 CDMA2000 : BC0 TD-SCDMA : B34/B39 GSM : B2/B3/B5/B8
NFC	ISO/IEC14443, ISO/IEC15693, MIFARE, Felica, Read distance : 3-5cm, Front
SENSOR	1. Light Sensor 2. Proximity Sensor 3. Geomagnetism 4. Gyroscope 5. Accelerometer 6. Baroceptror
PRODUCT SIZE / WEIGHT	228*137*13.3mm / 570g
POWER AND BATTERY	7800mAh/3.8V Play video duration : About 15 Hous (70% volume, 70% nit, Play 1080PHD video) Screen standby duration : About 200 Hous
BATTERY TYPE	Built in unremovable Li-ion Polymer Battery
LCD	8 inch / 1200*1920 / Min : 330nit, Typ : 350nit Max : 400nit / IPS Screen / Active Area :107.64(H) x 172.224(V)
SPEAKER	8Ω, 1.5W x1
BUTTON	Power, V+, V-, P, F, H
PROOF DEGREE	1. Waterproof IP65, but in fact is IP67 design 2. Drop 1.2m, 6 sides
CERTIFICATION	1. Military 810G 2. EU CE, US FCC
LIGHT TRANSMITTANCE	
LANGUAGE	
CAMERA	
BLUETOOTH	
MULTI-MEDIA (HARDWARE DECODING)	Photo Viewer : BMP, JPG, GIF, PNG Video Format :MEPG 1/2/4,H.263/H.264,RMVB,WMV/ VC-1,MVC,AVS,MJPEG. (UP TO 1080P) Audio Format : MP3,WMA,WAV,OGG,FLAC,ALAC,APE,AAC,AC-3,DTS (need license)
INTERFACE IN/OUT PORT	1. USB 2.0 *1 2. Download/Charge *1 3. RJ45 Ethernet 10/100M (USB 3.0 transfer) *1 4.RS232(Miniusb Transfer) *1 5. 3.5mm headphone jack *1 6. DC power jack (5V, 3A, Ø3.5mm) *1
POGOPIN	Back 16PIN : USB2.0x1+UART RS232x1 Bottom 8PIN : USB2.0x1+UARTRS232x1+Chargerx1

OPTIONAL

FINGER PRINT	
SCANNER	
UHF RFID	
ACCESSORIES	



BPR-1011W

PRODUCT SPEC

PHYSICAL CHARACTERISTICS			
	i5,i7	Z8350	N5100
CPU	Intel i5-8200Y / (optional : i7-8500Y)	Intel cherry trail Z8350, 1.44Ghz-1.92Ghz	Intel N5100 Quad Core, 1.1GHz
OS	windows 10 pro	windows 10 pro	Windows 10 Home/Pro/Iot
NFC	13.56 MHz, Distance: 7-15mm, ISO14443 TYPE A	ISO/IEC14443, ISO/IEC15693, MIFARE, Felica, Read distance: 3-5cm, Front	13.56 MHz, Distance: 7-15mm, ISO14443, TYPE A, Mifare
RAM/ROM	8GB/256GB (optional : 8/512GB, 16/512GB)	4GB/64GB	8GB/256GB (optional : 4GB/64GB)
WIFI	802.11a/b/g/n/ac, Wireless AP (Mobile AP)2.4G, 5G	802.11a/b/g/n/ac Wireless AP (Mobile AP)2.4G, 5G	802.11a/b/g/n/ac Wireless Internet Wireless AP (Mobile AP)2.4G, 5G, Intel Stone Peak 3165
GPS	Support Beidou+GPS+GLONASS Capture sensitivity : -163 dBm Cold start : 35seconds Hot start : 1seconds	Support Beidou+GPS+GLONASS / Capture sensitivity : -163 dBm / Cold start : 35seconds / Hot start : 1seconds	BDS, GPS, GLONASS
BLUETOOTH	BT4.2	BT4.0, Transmission distance : 8 meter	4.2 version
LCD	10.1 inch, 1200*1920, Max 500nit, IPS Screen	10.1 inch, 1200*1920, Max 500nit, IPS Screen	10.1 inch, 1200*1920 IPS Screen; 1000nits(800*1280) Optional
POWER AND BATTERY	6000mAh , 7.6V Play video duration : 8H Screen standby duration : 9H	Main battery : 12000mAh / Voltage 3.8 Vdc (45.6Wh), Secondary battery : 2550mAh Play video duration : 7hours Screen standby duration : 5days	6000mAh, 7.6V Play video duration : 8hours Screen standby duration : 4days
BUTTON	Power, V+ , V- , P, F, H	Power, V+ , V- , P, F, H	V+ -, Power, "F" for Barcode Scan Customized Button: P,H
CERTIFICATION	1. MIL-STD-810G, 2. EU CE, 3. US FCC	1. MIL-STD-810G, 2. EU CE, 3. US FCC	1. MIL-STD-810G, 2. ISO, 3. IP67, 4. MSDS, 5.CE, 6.FCC
HIGH PRECISION GPS	-	-	Optional : UM960, TU101
TEMPERATURE	Storage Temperature: -25 °C to 80 °C / Operation Temperature: -20 °C to 60 °C	Storage Temperature: -25 °C to 80 °C / Operation Temperature: -20 °C to 60 °C	Storage Temperature: -25 °C to 80 °C / Operation Temperature: -20 °C to 60 °C
TOUCH SCREEN	10 Point Touch / Support stylus	10 Point Touch / Support stylus	10 Point Touch / Support stylus
CAMERA	Front Camera 5.0M+Rear Camera 13M.0M	Front Camera : 2.0M + Rear Camera : 5M.0M	Front: 5MP, Rear: 13MP
SPEAKER	8Ω, 1.5Wx1	8Ω, 1.5Wx1	1.5 Watt
SIZE / WEIGHT	275*178*18mm / 1100g	275*178*18mm / 1040g	273*172*20mm / 1100g
LANGUAGE	Multi Language	Multi Language	Multi Language
SENSOR	1. Light sensor, 2. Gravity sensor	1. Light sensor, 2.Gravity sensor	1. Light sensor, 2. Compass, 3. Baroreceptor
INTERFACE/IN,OUT PORT	Type-A : USB3.0 x2 HDMI : HDMI Type A x1, Audio and video output RJ45 Ethernet : 10/100/1000M x1 Ø3.5mm Standard headphone interface x1 DB9 RS232 : 9-pin serial port x1 DC power interface : DC 12V 4A Ø4.0mm power interface x1	Type-A : USB2.0 x1 Type-B : USB3.0 x1 MicroUSB x1 HDMI : HDMI Type A x1, Audio and video output RJ45 Ethernet : 10/100/1000M x1 Ø3.5mm Standard headphone interface x1 DB9 RS232 : 9-pin serial port x1 DC power interface : DC 5V 3A Ø3.5mm power interface x1	HDMI*1, SIM Card Slot*1, TF Card Slot*1 (Max Support 128G), Earphone*1, DC*1; 3.5*12mm, USB 3.0 *2, RJ45*1, RS232*1
POGOPIN	Back 16PIN : USB 2.0 x1 + UART TTL x1 Bottom 8PIN : USB 2.0 x1 + UART TTL x1 + Charger x1	Back 16PIN : USB 2.0 x1 + UART TTL x1 Bottom 8PIN : USB 2.0 x1 + UART TTL x1 + Charger x1	1. 16pin back of cover, include(1USB, 1 RS232, 1 UART, 3.3V, 5V) 2. 8pin in bottom(1USB, 1 RS232, 1 UART, 5V) VESA hole 75*75mm or 90*90mm
CASING MATERIAL	ABS/PC/Rubber TPU/Aluminum	ABS/PC/Rubber TPU/Aluminum	ABS/PC/Rubber TPU/Aluminum
PROOF DEGREE	1. Waterproof IP54 2. Drop 1.2m, 6 sides	1. Waterproof IP65 2. Drop 1.2m, 6 sides	Anti-dust & Waterproof IP65 Dropping Resistance 1.2 meter
VWAN		Default : SLM770A-SA : (Global band) LTE FDD:B1/2/3/4/5/7/8/28/66 LTE TDD:B40 WCDMA-B1/2/4/5/8 GSM:850/900/1800/1900 Optional : SLM750-VA (only North America) LTE-FDD:B2/4/5/12/13/17/25/26 LTE-TDD:B41 WCDMA-B2/4/5 GSM:850/1900	
OPTIONAL	FINGER PRINT	Support	
	SCANNER	Support	
	UHF RFID	Support	
	ACCESSORIES	Extra Hand-strap (wrist strap), Extra Hand-string (carry strap), Docking station, Extra battery 12000mAh, Car holder (compatible 8inch), Car docking 12V In 5V out (include 12V/3A Car charger), Car charger, Stylus pen, 5V3A EU/US charger, Keyboard (compatible android&windows)	

Industrial Tablet



PRODUCT SPEC

PHYSICAL CHARACTERISTICS	BPR-10IIA		
	MT6789	MT8788	RK3399
CPU	MTK MT6789 Octa Core 2.2GHz	MTK MT8788 8core ARM® Cortex-A73 MPCore™ up to 2.0GHz	RK3399 6 Core 1.8GHz, A72
OS	Android 13.0 / Support GMS	Android 11.0	Android 10
NFC	13.56 MHz, Distance: 7-15mm ISO14443, TYPE A, Mifare	13.56 MHz, Distance: 7-15mm ISO14443, TYPE A, Mifare	13.56 MHz, Distance 5cm or above
RAM/ROM	8GB/256GB (optional : 12GB/256GB)	4GB / 64GB 6GB / 128GB; 8GB / 256GB Optional	4GB+64GB
WIFI	802.11a/b/g/n/ac Wireless Internet Wireless AP (Mobile AP) 2.4G, 5G / AP6255	802.11a/b/g/n/ac, Wireless AP (Mobile AP) 2.4G, 5G AP6255	802.11a/b/g/n Wireless internet Wireless AP (Mobile AP) 2.4G, 5G
GPS	BDS, GPS, GLONASS	BDS, GPS, GLONASS	Baidou, GPS, GLONASS
BLUETOOTH	5.0 Version	4.2 Version	4.0 Version
LCD	10.1 inch / 1200*1920 / 450nits / IPS Screen	10.1 inch, 1200*1920, 450nits / IPS Screen, 1000nits(800*1280) Optional	10.1 inch, 1200*1920 500 nits sunshine readable
POWER AND BATTERY	12000mAh 3.8V, Lithium Ion Battery Duration: 19 hours Standby time: 15 days	12000mAh 3.8V, Lithium Ion Battery Duration : 14 hours / Standby time : 9 days Video playback time is: about 15H (70% volume, 70% lumen brightness, 1080 HD video playback)	12000mAh 3.8V, Lithium Ion Battery Duration: 19 hours / Standby time: 15 days 3.5*1.35mm, 5V 3A DC in put /Magnetic charger
BUTTON	V+ -, Power, "F" for Barcode Scan / Customized Button: P,H	V+ -, Power, "F" for Barcode Scan / Customized Button: P,H	V+ -, Power, P, F, H
CERTIFICATION	MIL-STD-810G / ISO / IP65 / MSDS / CE / FCC	MIL-STD-810G / ISO / IP65 / MSDS	-
HIGH PRECISION GPS	UM960; TU101 Optional / Centimeter level, support Beidou, GPS, GLONASS, Galileo		
TEMPERATURE	Store Temperature: -25 °C to 80 °C / Operation Temperature: -20 °C to 60 °C		
TOUCH SCREEN	10 Point Touch / Support stylus		
CAMERA	Front: 5MP / Rear: 13MP / Rear camera with Flash light		
SPEAKER	1.5 Watt		
SIZE / WEIGHT	273*172*20mm / 1.1kg		
LANGUAGE	Multi language		
SENSOR	1. Light sensor / 2. Compass / 3. Gravity / 4. Acceleration / 5. Barceptor		
INTERFACE/IN,OUT PORT	1. Type-C *1; OTG / 2. SIM Card Slot*1 / 3. TF Card Slot*1 Max Support 256G / 4. Earphone*1 / 5. DC*1; 3.5*12mm / 6. USB 2.0 *1 / 7. RJ45*1 / 8. RS232*1		
POGOPIN	Bottom pogopin: USB 2.0 Charging RS232 / Back pogopin: USB 2.0 Charging RS232		
CASING MATERIAL	ABS/PC		
PROOF DEGREE	Anti-dust & Waterproof IP65 / Dropping Resistance 1.2 meter		
WWAN	4G LTE, 3G WCDMA, GSM 4G Fre : TDD-LTE: B34/B38/B39/B40/B41 FDD-LTE : B1/B2/B3/B5/B7/B8/B12/B17/B20/ B26/B28A WCDMA : B1 : 2100MHZ, B2 : 1900MHZ, B5 : 850MHZ, B8 : 900MHZ, CDMA2000 : BCO, TD-SCDMA: B34/B39, GSM : B2/B3/B5/B8	4G LTE, 3G WCDMA, GSM 4G Fre : TDD-LTE: B34/B38/B39/B40/B41/B66 FDD-LTE : B1/B2/B3/B4/B5/B7/B8/B12/B17/ B20/B28 WCDMA: B1 : 2100MHZ, B2: 1900MHZ, B5: 850MHZ, B8 : 900MHZ, CDMA2000: BCO, TD-SCDMA: B34/B39 GSM: B2/B3/B5/B8	4G LTE, 3G WCDMA, GSM 4G Fre: FDD: B1, B2, B3, B5, B7, B8, B12, B20 TDD: B38, B39, B40, B41, B34 WCDMA: B1, B8 TD-SCDMA: B34, B39 GSM / GPRS / EDGE
OPTIONAL	FINGER PRINT	Support	
	SCANNER	Support	
	UHF RFID	Support	
	ACCESSORIES	Extra Hand-strap (wrist strap), Extra Hand-string (carry strap), Docking station, Extra battery 12000mAh, Car holder (compatible 8inch), Car docking 12V In 5V out (include 12V/3A Car charger), Car charger, Stylus pen, 5V3A EU/US charger, Keyboard (compatible android&windows)	

Copyright © 2024 Aroot Co., Ltd. All right reserved.
All specifications and designs are subject to change without notice.

01/2025
www.miniprinter.com



sewoo

Aroot CO., Ltd.
Republic of Korea [Head Office / R&D Center]
28-6, Gajangsaneopdong-ro, Osan-si, Gyeonggi-do, 18103, Republic of Korea
T. +82-31-8077-5000 F. +82-31-624-5310 E. sales@miniprinter.com